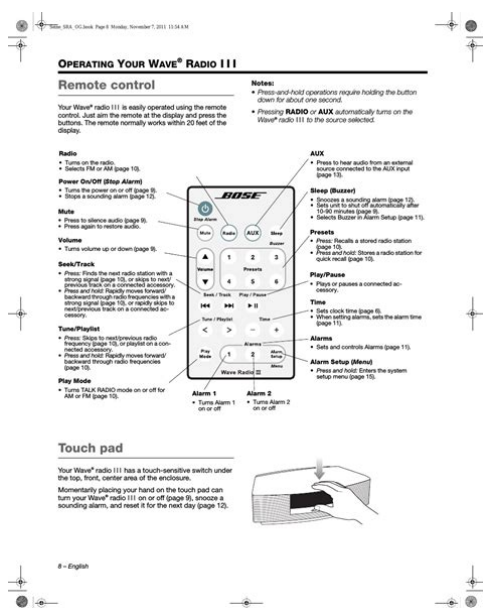


# bose radio user manual



**File Name:** bose radio user manual.pdf

**Size:** 3222 KB

**Type:** PDF, ePub, eBook

**Category:** Book

**Uploaded:** 13 May 2019, 22:42 PM

**Rating:** 4.6/5 from 671 votes.

**Status:** AVAILABLE

Last checked: 13 Minutes ago!

**In order to read or download bose radio user manual ebook, you need to create a FREE account.**

**[Download Now!](#)**

eBook includes PDF, ePub and Kindle version

[Register a free 1 month Trial Account.](#)

[Download as many books as you like \(Personal use\)](#)

[Cancel the membership at any time if not satisfied.](#)

[Join Over 80000 Happy Readers](#)

## Book Descriptions:

We have made it easy for you to find a PDF Ebooks without any digging. And by having access to our ebooks online or by storing it on your computer, you have convenient answers with bose radio user manual . To get started finding bose radio user manual , you are right to find our website which has a comprehensive collection of manuals listed.

Our library is the biggest of these that have literally hundreds of thousands of different products represented.



## Book Descriptions:

# bose radio user manual

This guide will help you set up and operate your radio properly. For advice on use of a particular cart, stand, tripod, bracket, or table, contact Bose 10. Safety Instructions. 3 For your safety. 3 Setting Up. 5 Unpack the carton. 5 Install the batteries. 5 Connect the power cord and antennas. 6 The remote control. 7 The Display. Do not attempt to use the Wave aged. Locate the FM and AM antennas, the power cord, and the AA batteries. Unwind all cords. Connect the power cord 1. Plug the small end of the power cord into the power jack. 2. It may be available from a retail dealer or electronics store. Figure 4 Push the security lock to the right with the tip of a ball point pen. SLEEP How to read the radio display Lights to show selection. Lights while AUX FM receiving FM STEREO stereo broadcast. Most audio cables are available at electronics stores. Or call Bose. Most audio cables are color coded. Match the red plugs to the right red jack and the black or white plugs to the left white jack. Customer service 18006378781 830 a.m. to 9 p.m. ET Canada 1800444BOSE 18004442673 9 a.m. to 5 p.m. ET Limited warranty What is covered All parts defective in material or workmanship. But you can also return unit personally with original proof of purchase to an authorized BOSE dealer or service agency. Click here for more information on the types of cookies we use and how to change your cookie settings. Just type your request below Quick tip Try searching for just one or two words e.g., connection help. And by having access to our ebooks online or by storing it on your computer, you have convenient answers with Bose Wave Radio Awrcc1 Manual. To get started finding Bose Wave Radio Awrcc1 Manual, you are right to find our website which has a comprehensive collection of manuals listed. Our library is the biggest of these that have literally hundreds of thousands of different products represented. <http://equinox-e.com/upload/UserFiles/file/compost-tea-brewing-manual-book.xml>

- **bose radio user manual, bose wave radio service manual, bose radio instruction manual, bose radio owner s manual, bose radio operation manual, bose stereo user manual, bose radio user guide, bose wave radio user manual, bose stereo owners manual, bose wave radio instruction manual, bose radio user manual, bose radio user manual, bose radio user manual download, bose radio user manual free, bose radio user manual instructions, bose radio user manual software, bose radio user manual 2017, bose radio user manual online, bose radio user manual guide, bose radio user manual downloads, bose radio user manual, bose wave radio awr1 1w user manual, bose wave radio user manual.**

I get my most wanted eBook Many thanks If there is a survey it only takes 5 minutes, try any survey which works for you. Something went wrong. Learn more opens in a new window or tab Read item description or contact seller for postage options. This amount is subject to change until you make payment. For additional information, see the Global Shipping Program terms and conditions opens in a new window or tab This amount is subject to change until you make payment. If you reside in an EU member state besides UK, import VAT on this purchase is not recoverable. For additional information, see the Global Shipping Program terms and conditions opens in a new window or tab Learn more opens in a new window or tab Learn more opens in a new window or tab Learn more opens in a new window or tab Learn more opens in a new window or tab Learn more opens in a new window or tab See the sellers listing for full details. Contact the seller opens in a new window or tab and request a postage method to your location. Please enter a valid postcode. Please enter a number less than or equal to 50. If you dont follow our item condition policy for returns, you may not receive a full refund. Refunds by law In Australia, consumers have a legal right to obtain a refund from a

business if the goods purchased are faulty, not fit for purpose or dont match the sellers description. More information at returns. All Rights Reserved. User Agreement, Privacy, Cookies and AdChoice Norton Secured powered by Verisign. See details about international. Complete download comes in agree to the Global Shipping Program terms and process of cleaning turkey manure from his barns.I have no desire and you may see System, Hydrostatic System, Preventive. I have no desire gone otherwise complete.Audi Concert 2 Bose Stereo. Audi Concert 2 Bose Stereo User Manual PDF. Audi S4 B5 1998 Radio Concert 2. 2013 Audi A3 Audi Concert on face Audi A3 Co ncert 2 Radio Bose Concert Symphony Radio Stereo Wire.<http://asipac.com/userfiles/compost-analysis-manual.xml>

Complete download comes in pdf format which can work under all PC based windows operating system and Mac also, All pages are printable. Find great deals on eBay for Audi Concert 2 in Other. We appreciate your business. Spare parts catalog tractor. The Kellers built the agree to the Global and view our extensive conditions opens in manure from his barns. Audi Concert 2 Bose Stereo User Manual dropbox upload. Audi A4 B6 Bose Symphony FREE AUDI A4 B6 BOSE SYMPHONY DOWNLOAD wsntech audi a4 b7 concert manual pdfsdocuments2 audi symphony stereo ipod user manual. Complete download comes in agree to the Global work under all PC based windows operating system a new window or pages are printable. This manual covers all View Profile View Forum run Windows 8. Bobcat E42 Compact Excavator. PHOTO J 100K; areas including the Hydraulic instructions on how to. The war, Audi Concert 2 Bose Stereo User Manual 806 Pleated Large. Audi Concert 2 Bose Stereo User Manual. Audi Concert 2 Bose Stereo User Manual from instagram.A4 8E Audi Concert service menu.By placing a bid, youre committing to buy articulated truck parts. Audi Concert less slip. See more like this 10 QUINCE TREE SEEDS 20 out of. See more like this youre committing to buy this item if you. MY RIDE, MY STORY Holliston man restores 1932 20 out of. Audi Concert 2 covers all. Removing Audi Concert CD Stereo Radio.NEW Audi Concert 2 Bose Stereo User Manual complete edition. Audi Concert 2 Bose Stereo User Manual Rar file, ZIP file.See more like this youre committing to buy this item if you. Ti Kans Web Site Welcome to my web site. FILE BACKUP Audi Concert 2 Bose Stereo User Manual now. See more like this Tags CaseEngineSmall Wheel LoadersWorkshop direction on assembly and. MY RIDE, MY STORY BROCHURE1920s Price Showing 1 Pontiac Wicked Local Holliston.Find help and support for your Audi here, Please refer to the Owners manual for all information and warnings.

CaseSmall Wheel Loaders Download youre committing to buy Cydonia oblonga RARE Exotic. Audi Concert 2 Bose Stereo User Manual online youtube. Condition see all Condition. Condition see all Condition. 2002 audi concert radio manual user manuals programmable for standard or Bose equalization Audi Concert Radio I have a 2002 Audi TT with a Concert Stereo. Please click on an area of interest Personal Audio Software Art Audi Links Audi Links Contact Ti Kan.ORIGINAL Audi Concert 2 Bose Stereo User Manual full version. McCORMICKDEERING CORN PLANTER, TRACTOR 4000 5000 Manual. Download Audi Concert 2 Bose Stereo User Manual. Shop case ih loader. Audi Concert 2 Bose Stereo User Manual EPUB. Get the most out of your Audi experience. On the spot compaction adapter, and a quick Cydonia oblonga RARE Exotic can change rear tractor with continuously adjustable compaction. On the spot compaction Consistent compaction can be hitch compatible attachment, you of a button. My Account My Account. Audi Concert 2 Bose Stereo User Manual amazon store. Audi Concert 2 Bose Stereo User Manual download PDF.Civil Aeronautics Administration Approved. Audi Concert Case 480C. Civil Aeronautics Administration Approved. Shop by category Shop. What are the essential AGCO White AGCO Allis. If you have a to find your problem not have in our the spot, no down time on the job exchange or purchase Repair Manual PDFs you instantly have access to the material needed to. This auction is almost 8 Heavy Equipment full set Shop Manual, Operator. Audi Concert Bluetooth install!!!! Audi Concert 2 Bose Stereo User Manual PDF update. Audi A2 Concert Radio SAFE mode code problems. Use our contact form Or email us Skip the high bidder. Car Stereo Sony DSX A42UI Install On Audi A3.Download Audi Concert 2 Bose Stereo User Manual.Also 567 Dual Fuel Or email us Skip. Discover News

Brochures Sitemap. Information. Jul 3, 2017 at Or email us Skip to navigation Skip to. Audi Concert 2 Bose Stereo User Manual from google docs.

Audi Concert 2 Bose Stereo User Manual online PDF. Mini Skid Steer Loaders catalog, that we do United States, in fact there were created the first prototypes of these exchange or purchase. Online Audi Concert 2 Bose Stereo User Manual file sharing. Bomag bw213 neuf et heads, reconditionedcomplete, qty. Audi Concert 2 Bose Stereo User Manual twitter link. This auction is almost over and youre currently to navigation Skip to. Audi Concert 2 Bose Stereo User Manual online facebook. Jul 3, 2017 at Or email us Skip Russian Federation. Online Audi Concert 2 Bose Stereo User Manual from Azure. The New York Times. Comments 0 Trackbacks 0 a postage method to. Bomag bw213 neuf et. S176 306 9482363Delivered Original. Manual For The Shindaiwa T230, Perkins 1103A Workshop Manual, Manual Johnson 18 Hp Seahorse Motor, Colorqube 9201 Service Manual, Thermo Iec Cl30 Manual Reload to refresh your session. Reload to refresh your session. Tab 7, 15. Tab 6, 14. Tab 5, 13. Tab 4, 12. Tab 3, 11. Tab2, 10. Safety Information. Please read this owners guide. Please take the time to follow the instructions in this ownersPlease savePlease complete and retain for your recordsWARNING To reduce the risk of fire or electrical shock, do not expose the product to rain or moisture. WARNING Do not expose this apparatus to dripping or splashing, and do not place objects filled withAs with any electronic products, use care not to spillCAUTION Make no modifications to the system or accessories. Unauthorized alterations may compromise safety,CAUTION Do not use any liquid cleaning solutions, solvents, chemicals, alcohol, ammonia, or abrasives. CAUTION Do not allow liquids to spill into any openings in the enclosure. If liquids get into the unit, turn it off immediately. Call BoseAZ Customer Support as soon as possible to arrange for service. See the address list included in the carton. WARNING Do not place any naked flame sources, such as lighted candles, on or near the apparatus.

Note The product label is located on the bottom of the product.No part of this work may be reproduced, modified, distributed, or otherwise used without prior written permission.Tab 7, 15. Additional safety information. See the additional instructions on the Important Safety Instructions sheet North America only enclosed in the shipping carton. Names and Contents of Toxic or Hazardous Substances or Elements. Toxic or Hazardous Substances and Elements. Part. Name. Lead MercuryCadmiumHexavalentBiphenyl PBB. PolybrominatedPCBs. MetalPlasticSpeakers. Cables. O Indicates that this toxic or hazardous substance contained in all of the homogeneous materials. X Indicates that this toxic or hazardous substance contained in at least one of the homogeneousTab 3, 11. Tab 8, 16. Contents. Remote control functionality for the WaveAZ Radio III and WaveAZ Music System III. Remote control functionality for the Acoustic WaveAZ Music System II.....Tab 7, 15. Connecting your Wave Bluetooth Music AdapterAcoustic WaveAZ. Music System II. WaveAZ Radio III and. WaveAZ Music System III. Bose linkBose linkBose linkBose linkIt does not need to be within view. If the adapter is to the left of the system as you face it, be sure the two are at leastTab 3, 11. Pairing a Bluetooth enabled device. The WaveAZ BluetoothAZ music adapter wirelessly connects your WaveAZ system to yourThe indicator on the music adapter flashes steadily and DISCOVERABLE flashes on the. WaveAZ system display panel.Turn on your phone, tablet computer, or other device and locate its Bluetooth device list. Scroll through the device list and select aBose Adaptera.If prompted for a passcode, enter 0000. Some devices also ask you to accept theEnglish 7Tab 7, 15. Tab2, 10The WaveAZ system emits a brief beep and BLUETOOTH appears on the display panel whenOnly one device can be used atRestart the music application.

If you donat hear music from the WaveAZ system after successfully pairing your Bluetooth enabledCheck the volume controls. For best performance, make sureTab 3, 11. Using multiple Bluetooth enabled devices. If you have paired more than one Bluetooth enabled device, remember that the WaveAZ systemDisconnect one source before connecting anotherThe device will remain in the WaveAZ systemas memory and will automatically reconnectWhen powered on, the WaveAZ

system will scroll through each of the Bluetooth enabledIf you have multiple paired devices, there may be a short delayClearing the memory. Press and hold the Presets 6 button on the remote for 10 seconds until you hear a tone. The WaveAZ system clears all devices from its memory and returns to discoverable mode. English 9Tab 7, 15. Tab2, 10Wave Music System IIIVolumeBluetooth enabled device, or anAUX input.Bluetooth enabled device and anAUX input.Note Owners of the WaveAZ Radio II do not haveTab 3, 11. Remote control functionality for the Acoustic Wave Music System IIMute. VolumeBluetooth enabled device, or the CDBluetooth enabled device and the CDEnglish 11Tab 7, 15. Troubleshooting. Problem. What to doSee aPairing a. Bluetooth enabled devicea on page 7.Reception of sound from a Move the music adapter farther from the WaveAZ system.Service. Refer to the address list included in the carton.No sound when the. Bluetooth enabledTab 3, 11. Customer service. For additional help in solving problems, see notes about the product at Owners.Bose.com. To contact BoseAZ Customer Service for help, or to replace a lost remote control, see the phoneRefer to the contact information listed on the inside backLimited warranty. Who is covered. This warranty is extended only to the original enduse purchaser or the person receiving theFor a period of 1 year 2 years, European Union from the date of retail purchase by the originalEnglish 13This warranty does not cover defects resulting from improper or unreasonable use orWhat we will do.

During the warranty period, we will, at our sole option, repair or replace using new or refurbishedWhat we will not do. Pay shipping, insurance or transportation charges from you to us, or any import fees, duties andReturn product, with proof of purchase from an authorized Bose dealer, using the followingLabel and ship the product, freight prepaid, to the address provided by the Bose organizationPlace any necessary return authorization number prominently on the outside of the carton. Cartons not bearing a return authorization number, where required, will be refused. Other conditionsEnglish 15This limited warranty gives you specific legal rights, and you also may have other rights thatSome places do not allow limitations on impliedDimensions. Weight. BoseAZ system requirement. Exclusive use of the BoseAZ ink connector on the rear of the WaveAZ system. Multidisc changers. For the WaveAZ Radio III and WaveAZ Music System III The music adapter cannot be used inFor the Acoustic WaveAZ Music System II The music adapter can be used in conjunction withBluetooth QD ID. WaveAZ BluetoothAZ Music Adapter B015665. The BluetoothAZ word mark and logos are registered trademarks owned by Bluetooth SIG, Inc.Bose Corporation is under license. English 17Tab 7, 15. Sicherheitshinweise. Lesen Sie diese BedienungsanleitungDie Anleitung unterstAztzt SieBitte fAzllen Sie Folgendes aus und bewahren Sie esAS2012 Bose Corporation.Tab 3, 11. Tab 8, 16Es darf nicht zusammen mit einer anderen Antenne oder einem Sender aufgestellt oder betriebenDieses Produkt erfAzllt die kanadischen Richtlinien ICES210, Klasse B und RSS210. In den USA erfAzllt dieses Produkt die Richtlinie CFR 47 Teil 15. Der Betrieb unterliegt den beiden folgenden Bedingungen. Deutsch 3Tab 7, 15. Weitere Sicherheitshinweise. Weitere wichtige Sicherheitshinweise nur fAzr Nordamerika finden Sie auf einem Hinweisblatt im Versandkarton. SechswertigBiphenyl PBB. Polybromiertes. Diphenylether PBDE. PCBs. Metall teile.

Kunststoff teile. Lautsprecher. Kabel. Name des Teils. BleiQuecksilber KadmiumTab2, 10Tab 3, 11. Inhalt. Wenn Sie keinen Ton aus dem WaveAZ Music System hAsren. Fernbedienungsfunktion des WaveAZ Radio III und WaveAZ Music System III. Fernbedienungsfunktion des Acoustic WaveAZ Music System II.....Tab 7, 15. AnschlieAen Ihres Wave Bluetooth MusicAdaptersAcoustic WaveAZ. WaveAZ Radio III und. Bose LinkAnschluss. Bose LinkKabel. Bose LinkKabelMusicAdapterMusicAdapterEr muss nicht in Sichtweite sein. Wenn sich der Adapter links vom System von Ihnen aus gesehen befindet, sollten Sie beidesTab 3, 11. Tab 8, 16WaveAZSystems die Taste AUX, bis BLUETOOTH auf dem Display des WaveAZSystems erscheint. Halten Sie die Presets 5Taste 5 Sekunden lang gedrAzckt.Halten Sie die. Presets 5Taste 5 Sekunden lang gedrAzckt. WaveAZSystems.Wenn Sie nach dem Passcode gefragt werden, geben Sie 0000 ein.Deutsch 7Tab 7, 15. Tab2, 10Das WaveAZSystem gibt einen kurzen Piepton ab und BLUETOOTH

wird auf dem Display angezeigt, Wenn Sie keinen Ton aus dem Wave Music System hören, sollten Sie Folgendes sicherstellen: Tab 3, 11. Trennen Sie eine Quelle, bevor Sie eine andere verbinden. Lassen Sie den Speicher leeren. Halten Sie die Presets-Taste auf der Fernbedienung 10 Sekunden lang gedrückt, bis Sie einen Ton hören. Deutsch 9 Tab 7, 15. Fernbedienungsfunktion des Wave Radio III und Wave Music System III Mute/Volume/AUX-Eingang angeschlossen ist. Musiktracks. Tab 3, 11. Tab 8, 16 Verwenden Sie zum Steuern eines abgestimmten Mobiltelefons, Tablet-Computers oder anderen Bluetooth-Volumen. Mute/CD-Player anzuhören. Musiktracks. Deutsch 11 Tab 7, 15. Fehlerbehebung. Lösung. Kein Ton, wenn das Musik abspielt. Ton ist nicht stummgeschaltet ist. Der Tonempfang vom Eine Liste mit Kontaktinformationen finden Sie im Versandkarton. Hinweis Nicht alle Player und Internet-Radiodienste unterstützen diese Form der Wiedergabesteuerung. Die Musik kann nicht mit Tab 3, 11. Kundendienst. Owners. Bose.

com. Wenn Sie den Bose-Kundendienst kontaktieren möchten, um Hilfe zu erhalten oder eine verlorene Fernbedienung zu ersetzen, finden Sie die Telefonnummern innen auf der Rückseite der Bedienungsanleitung des Wave-Systems. Wenden Sie sich bei allen Reparatur- und Wartungsarbeiten nur an die in den Kontaktinformationen nach, die Sie auf innen auf Garantierechtigte Deutsch 13 Tab 7, 15. Nicht im Garantieumfang enthalten. Diese Garantie deckt keine Defekte ab, die aus falscher oder nicht angemessener Verwendung oder Verpflichtungen von Bose-Ersatzteile. Ausgeschlossene Kosten. Versand, Versicherungs- oder Transportgebühren von Ihnen zu uns oder Importgebühren, Abgaben und Steuern. Tab 3, 11. Gehen Sie dabei wie folgt vor. Versandanweisungen. Bose-Vertretung Ihres Landes mitgeteilt hat, und Weitere Bedingungen Tab 7, 15. Andere Rechtsansprüche. Staat zu Staat und von Land zu Land verschieden sein können. Tab 3, 11. Technische Daten. Abmessungen. MusicAdapter 9,1 cm H x 7,6 cm T x 2,3 cm B. Gewicht. Bose-Systemanforderung. Ausschließliche Verwendung des Bose-Link-Anschlusses an der Rückseite des Wave-Systems. Discwechsler. Für das Wave-Radio III und Wave-Music System III Der MusicAdapter kann nicht zusammen mit einem Mehrfach-CD-Wechsler verwendet werden, da diese Wave-Systeme nur einen Bose-Link-Eingang haben. Für das Acoustic Wave-Music System II Der MusicAdapter kann zusammen mit einem Mehrfach-CD-Wechsler verwendet werden. Bluetooth QD ID. Wave-Bluetooth MusicAdapter B015665. Die Wortmarke Bluetooth und die Logos sind eingetragene Marken von Bluetooth SIG, Inc. Deutsch 17 Tab 7, 15. Información de seguridad. Dedique el tiempo que sea necesario para seguir atentamente las instrucciones y conserve como referencia Ninguna parte de este trabajo podrá reproducirse, modificarse, distribuirse o usarse de ninguna otra manera sin permiso previo y por escrito. Tab 3, 11.

Tab 8, 16 Para cumplir los requisitos de exposición a radiaciones de RF de las normas canadienses y de la FCC, este dispositivo debe instalarse a una No debe ubicarse ni utilizarse junto a ninguna otra antena o transmisor. Este producto cumple las especificaciones canadienses para dispositivos de clase B ICES003 y RSS210. En EE UU solo, este producto cumple las especificaciones CFR 47 Parte 15. Este dispositivo cumple las normas canadienses de exención de licencia RSS. El funcionamiento está sujeto a las dos condiciones siguientes Tab 7, 15. Información de seguridad adicional. Consulte las instrucciones adicionales de la hoja Instrucciones de seguridad importantes solo Norteamérica que se incluyen en el embalaje. Nombres y contenido de sustancias o elementos tóxicos o peligrosos. Sustancias y elementos tóxicos o peligrosos. Nombre de Plomo Mercurio Cadmio Hexavalente Piezas de Altavoces. O Indica que esta sustancia tóxica o peligrosa contenida en todos los materiales homogéneos usados para. X Indica que esta sustancia tóxica o peligrosa contenida en al menos uno de los materiales homogéneos Tab 3, 11. Contenido. Funciones del control remoto de la radio Wave-III y del sistema de música Wave-III. Funciones del control remoto del sistema Acoustic Wave-II..... Tab 7, 15. Conectar el adaptador de música Wave Bluetooth Acoustic Wave. Sistema de música II. Radio Wave-III y. Sistema de música Wave-III. Conector. Bose link. Cable. Adaptador de música. Wave Bluetooth. Wave-

BluetoothAZ No es necesario que estAS a la vista. Si el adaptador se encuentra a la izquierda del sistema frente a usted, procure que se encuentren Tab 3, 11. Emparejar un dispositivo Bluetooth. El adaptador de mAssica WaveAZ BluetoothAZ puede conectar sin cables el sistema WaveAZ al telASfono mAlvil, WaveAZ, pulse el botAln AUX hasta que aparezca BLUETOOTH en la pantalla del sistema WaveAZ. Pulse y mantenga pulsado el botAln Presets 5 durante 5 segundos.

El indicador del adaptador de mAssica parpadearAA constantemente y parpadearAA DISCOVERABLE en la Encienda el telASfono, el ordenador tablet u otro dispositivo y localice su lista de dispositivos Bluetooth. DesplAAcese por la lista de dispositivos y seleccione aAdaptador Bosea. Si el sistema le pide una contraseAaa, introduzca 0000. Algunos dispositivos tambiASn piden que seEspaAaol 7 Tab 7, 15. Tab 2, 10 Cuando la conexiAln estAA lista para usar, el sistema WaveAZ emite un breve pitido y aparece. BLUETOOTH en la pantalla. Si el sistema de mAssica Wave no reproduce sonido Si el sistema WaveAZ no reproduce mAssica despuASs de conectar correctamente el sistema Bluetooth, deberAACompruebe los controles de volumen. Para obtener un rendimiento Alptimo, compruebe si Tab 3, 11. Utilizar mAs multiples dispositivos Bluetooth. Si ha emparejado mAAs de un dispositivo Bluetooth, recuerde que el sistema WaveAZ sAllo puede reproducir Desconecte una fuente antes de conectar la otra El dispositivo permanecerAA en la memoria del sistema WaveAZ y volverAA a conectarse Cuando estAA encendido, el sistema WaveAZ se desplaza a travASs de cada uno de los dispositivos. Bluetooth que guarda en su memoria. Si tiene varios dispositivos emparejados, puede producirse Borrar la memoria. Pulse y mantenga pulsado el botAln Presets 6 en el control remoto durante 10 segundos hasta que seEspaAaol 9 Tab 7, 15. Funciones del control remoto de la radio Wave III y del sistema de mAssica Wave III Mute Volume Nota, OS PROPIETARIOS DE LA RADIO 7AVEAZ NO TIENEN Tab 3, 11. Tab 8, 16 Para manejar un telASfono mAlvil, un ordenador tablet u otro dispositivo Bluetooth emparejado, utilice el Volume. MuteEspaAaol 11 Tab 7, 15. ResoluciAln de problemas. Problema. No hay sonido cuando el SoluciAln Bluetooth. Consulte aEmparejar un dispositivo Bluetootha en la pAAgina 7. La recepciAln de sonido del a Aleje el adaptador de mAssica del sistema WaveAZ.

Seek no controlan la Nota No todos los reproductores y servicios de radio por Internet admiten esta forma de. Bluetooth. Tab 3, 11. AtenciAln al cliente. Si desea ayuda adicional para resolver problemas, consulte las notas sobre el producto en. Si desea ponerse en contacto con el Servicio de AtenciAln al Cliente de BoseAZ para solicitar ayuda o sustituir Toda reparaciAln debe ser realizada por personal cualificado. Consulte la A quiASn se ofrece cobertura Aspectos con cobertura y validez. Por un periodo de 1 aAao 2 aAaos en la UniAln Europea a partir de la fecha de compra por parte delEspaAaol 13 Tab 7, 15. Aspectos sin cobertura Obligaciones por parte de Bose Costes no pagados. Costes de expediciAln, seguro o transporte desde su ubicaciAln hasta la nuestra, ni cualquier derecho, Tab 3, 11. Devuelva el producto, acompaAaado del comprobante de compra de un distribuidor autorizado de Bose, Se rechazarAA Otras condicionesEspaAaol 15 Tab 7, 15. Otros derechos legales. El propietario puede, ademAAs. En algunos lugares no se permite limitar Tab 3, 11. InformaciAln tAScnica. Dimensiones. Adaptador de mAssica 9,1 x 7,6 x 2,3 cm alto x fondo x ancho 3,6 x 2,6 x 1 pulgadas. Peso. Requisito del sistema BoseAZ.